

# Scania Q&A Session 'Industry Standards'



## INDUSTRY STANDARDS



**THIS MEETING WILL BE RECORDED**



**POST YOUR QUESTIONS IN THE MEETING Q&A**



**FAQ'S & RECORDING WILL BE SHARED AFTER THE MEETING**

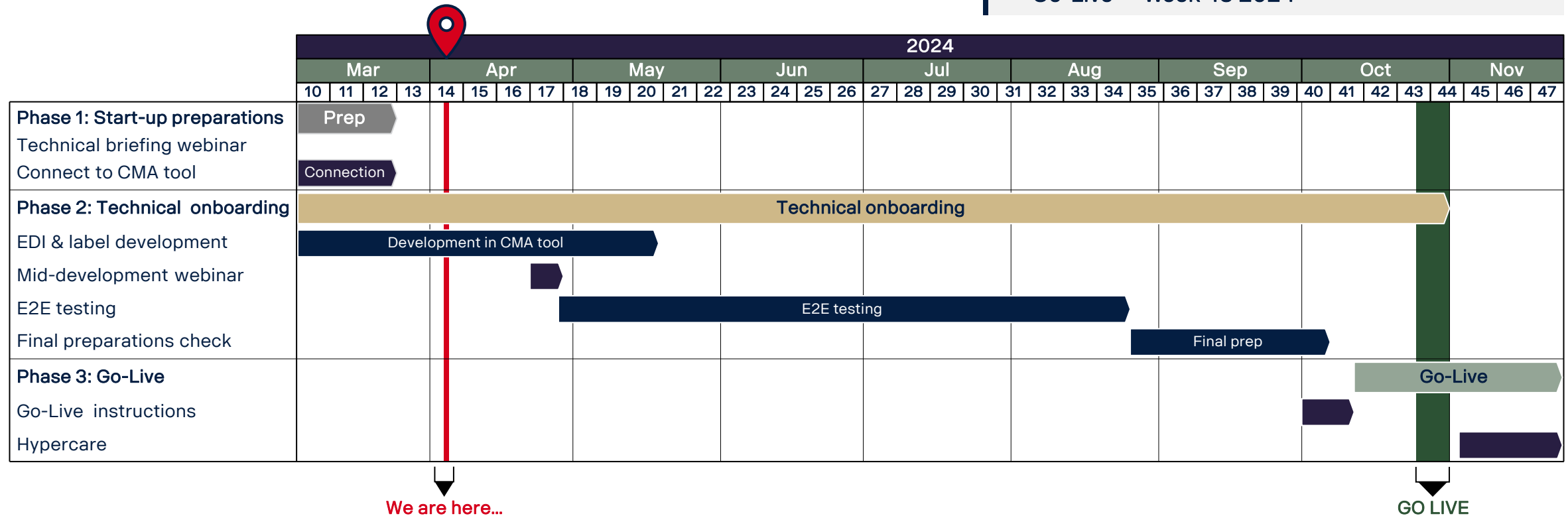


# Recap: Supplier onboarding timeplan & deadines overview



## Deadlines overview

- Development done – May 2024
- E2E testing done – August 2024
- Go-Live prep done – September 2024
- Go-Live – Week 43 2024

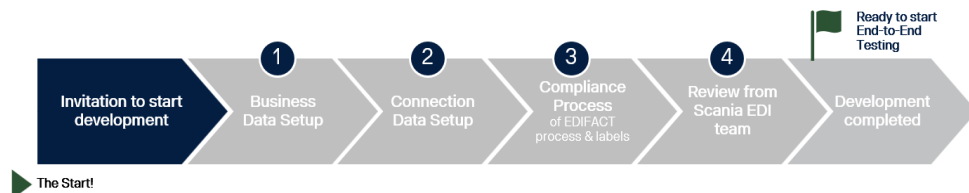




# Recap: You are expected to have started technical development in CMA-tool

## Connect to CMA-tool and start EDI & label development

- You have **received an invitation via email to start development of EDI messages and labels**, including a step-by-step guide on to use CMA tool.  
*If you are not received an invitation yet, please contact [supplier.readiness@scania.com](mailto:supplier.readiness@scania.com) at your earliest convince.*
- The CMA tool campaign contains **four steps that must be completed** before the EDI messages and labels are fully developed and approved.
- If you're **unable to commit to the given deadline in the campaign**, reach out to [supplier.readiness@scania.com](mailto:supplier.readiness@scania.com) immediately to



## Information and guidelines to follow

- All information regarding technical development can be found at **Scania Supplier Portal** under **Technical Specifications and guidelines**
  - Step-by-step guide for CMA tool can be found **here**
  - EDIFACT process specifications (STD172-1) can be found **here**
  - Label specifications (STD 4172-10) can be found **here**
  - Shipping & billing address can be found **here**
- If you have any questions or concerns, please contact [contactsupplier.readiness@scania.com](mailto:contactsupplier.readiness@scania.com)
- For inquiries regarding the technical process, please contact [edi@scania.com](mailto:edi@scania.com)
- For inquiries regarding the functionality of the tool, please contact [tps\\_scania@seeburger.de](mailto:tps_scania@seeburger.de)

# Next steps & actions required by you as a supplier

## Next steps for suppliers

- ✓ Ensure that you have submitted the IT landscape survey [accessible via this link](#).  
**Deadline Past**
- ✓ Complete development of EDI messages and labels in Scania CMA tool.  
**Deadline: Middle May**
- ✓ Attend the upcoming weekly Q&A session to get answers to technical questions.  
**Occurs every Thursday at 2:00 to 2:45 PM**
- ✓ Attend the mid-development webinar, which will focus on the upcoming testing process and the next steps.  
**Invitation will follow shortly**
- ✓ Perform E2E testing of EDI messages and labels.  
**Starting from w.18**

## Guidelines and contact details



Technical specifications, instruction videos and communication materials to be found at [Scania Supplier portal under Industry standards](#).



Technical questions can be directed to [edi@scania.com](mailto:edi@scania.com)



Question about functionalities of CMA tool can be directed to [tps\\_scania@seeburger.de](mailto:tps_scania@seeburger.de)

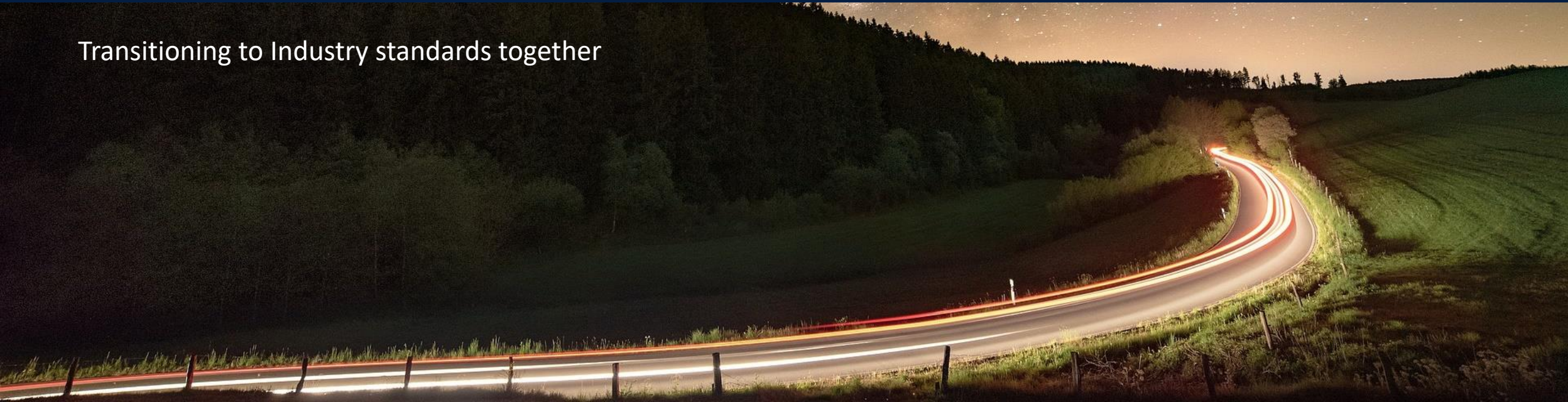


All other questions can be directed to [supplier.readiness@scania.com](mailto:supplier.readiness@scania.com)



# Thank you for participating today!

Transitioning to Industry standards together





# Q&A recap

# Q&A

## Relevant information

**Q:** Where can I find information on the updated EDI messages and labels as well as other relevant information?

**A:** All relevant information can be found on the Supplier portal under the Industry Standards, [linked here](#) – you need to login to access. The updated manual can also be found in the STD environment [linked here](#).

## Timeplan

**Q:** Is there a specific timeplan?

**A:** Go live is week 43. You will receive deadlines per onboarding phase – the upcoming deadline is in regards to development of EDI messages and labels as specified in the CMA tool – deadline is 8 weeks after you received the invitation. – next phase include E2E testing and you will receive more information on this matter in the coming weeks.

## HU number

**Q:** Where can I find further information on the HU number?

**A:** All relevant information regarding the HU number can be found in the STD4172-10 Scania Logistics Manual: Goods Labels – Design Specification.

## Relation to Cloud Migration

**Q:** Is the development related to the Cloud Migration to Seeburger?

**A:** No, please note that the Scania migration to Seeburger cloud is a separate project. Industry standards is referring to the launch of Scania's new IT landscape, making changes to the current EDI setup and label formats. These changes are not connected.

# Q&A

## Labels

**Q:** Will S, M and G pallet types be replaced in the ASM as well?

**A:** No. But the prefixes used is changed from S, M and G, into 1J single label for 5J mixed load and 6J for master load. The structure of the CPS loop is also different depending on the type of load. All of this can be found in STD4172-10 Scania Logistics Manual: Goods Labels – Design Specification. If

## EDI files and labels

**Q:** Where can I find examples of EDI files and labels?

**A:** When you login to the CMA tool you can download a sample of DELFOR. This is the input you need to start development. You can also find technical specifications on the supplier portal under the Industry Standards page, [linked here](#).

## Invoice

**Q:** Do I have to use the Invoice?

**A:** Yes, it is a complete package so you are required do develop new EDI messages (DELFOR, DESADV, INVOIC) and new Labels.

## Global Roll-out

**Q:** Will all Scania units move to the new ERP system? And if yes, when?

**A:** The implementation will be done one production unit at a time and in several steps. The implementation will be done over the coming years. The first release was for Battery Factory and the next will be for the Hasselt Logistics Hub.



# Q&A

## Supplier portal

**Q:** How do I access the supplier portal?

**A:** If you have trouble accessing the portal, please reach that you are logged in. If you still have issues, please reach out via email to [supplier.readiness@scania.com](mailto:supplier.readiness@scania.com)

## Standards

**Q:** The standard for STD4172-1 it is two years old, is it valid?

**A:** The STD412-1 standard is still valid. However, the STD4172-10 Scania Logistics Manual been updated during 2024. Please make sure you have the latest version.

## CMA tool

**Q:** What does CMA tool mean?

**A:** The CMA tool is the platform where you will perform your development. This will enable you to received automated compliance reports of your development and in the final step you will get validation from the EDI team.

## Seeburger, connection

**Q:** What is the relation between Seeburger and this update?

**A:** The cloud migration to Seeburger is a separate project. If you have not been migrated yet, we encourage you to contact [edi@scania.com](mailto:edi@scania.com)

# Q&A on the CMA tool

## CMA tool deadline

**Q:** What is the timeline for completing development in the CMA tool, and what happens if I cannot meet the deadline?

**A:** Deadline is 8 weeks after the invitation was sent – if you are challenged by this, please request for a different date in the campaign and reach out to the supplier readiness team separately.

## CMA tool invitation

**Q:** I have not received an invitation to the CMA tool, how do I proceed?

**A:** Please send an email either to the Supplier Readiness team or to the EDI inbox (supplier.readiness@scania.com, edi@scania.com)

## Multiple entities

**Q:** I have received multiple invitations to the CMA tool. Am I required to perform the setup and testing for each entity separately?

**A:** Yes, if you have received several invitations to the CMA tool you are required to perform development, testing and complete the campaign for each entity.

## CMA tool

**Q:** How does the CMA tool work?

**A:** If you have issues or problems with the CMA tool, please see the step-by-step guide in the supplier portal, [linked here](#). If you still need help, please send an email to [supplier.readiness@scania.com](mailto:supplier.readiness@scania.com) or [edi@scania.com](mailto:edi@scania.com) and we will help you.

# Q&A

## Hasselt

**Q:** Is it only suppliers delivering through Hasselt that are in scope for this release?

**A:** Yes, this release covers Hasselt Logistic Hub in Central Europe, Logistic Center & Consolidation Point. If you are unsure whether or not you are in scope, please reach out to your purchaser.

## License plate

**Q:** How does the new license plate work?

**A:** Once you receive and issue an agency code you will apply that according to standards and specifications. You will construct the license plate from the data identifier e.g. a 1J then you have your agency code, and your serial number.

## Plant numbers

**Q:** Will the plant numbers and loading points remain the same for Scania?

**A:** Yes. None of that is changing.

## Testing

**Q:** When we think we are ready to test, how do we plan the E2E testing?

**A:** Once we see that you have completed the campaign, we will start planning your E2E testing. E2E testing will start from week 18.

For specific technical questions, please reach out via email.



**SCANIA**