

Loading instructions Scania Zwolle shipments

1 Make sure the support-legs on the trailer are in contact with the ground

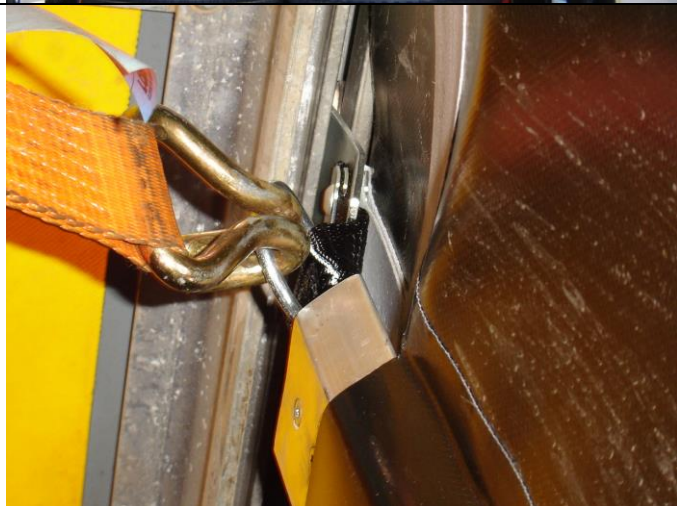
2 Each load should be secured using belts



3 In the back the last piles are extra secured with crossed belts.



4 For the crossed belts use the lashing ring designed in the trailer.



- In accordance to the protocol, the driver checks if the load is correct secured somewhere on the way to Angers.
- Smaller or lower piles will get an extra strap
- The trailer is only allowed to depart when the piles are loaded and tightened according to the instructions.