

In Embassy/Day

- You need to Create Dispatch to each and every PRU
- Example:
 - 33 Pcs of MH- 1875 dispatch to Scania Engine.
 - 45 pcs of MH-1871 dispatch to MAN Hasselt
 - 50 Pcs of Mh-1871 dispatch to Scania Transmission

You need to create 3 different dispatch orders/Day

In NILE/Day

- You need to Create Dispatch/Day
- Example:
 - 33 Pcs of MH- 1875 dispatch to Scania Engine.
 - 45 pcs of MH-1871 dispatch to MAN Hasselt
 - 50 Pcs of MH-1871 dispatch to Scania Transmission

**You can create 1 dispatch order/day
of:**


33 pcs of 1875

95 pcs of 1871 (45+50)

TO Scania EUROPE

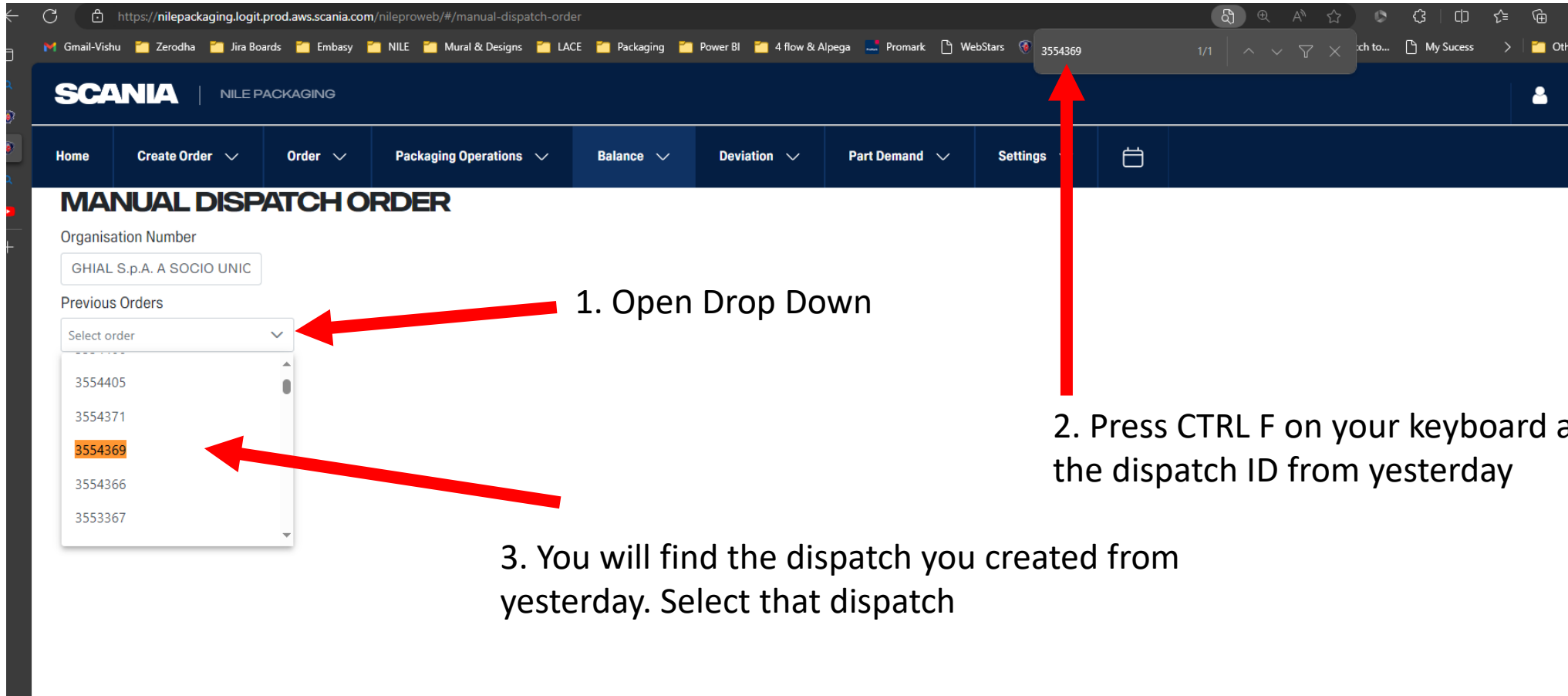
- The reason behind choosing the previous order is:
 - If you have already created a dispatch order with 10 packaging materials today and once you click submit order will be generated with ID
 - The next day if you want to generate the same dispatch order again, you can open the dropdown, then press CTRL F on your keyboard and type the Dispatch ID you created yesterday and load it to the right table on dispatch screen 😊

Example: Yesterday, I have created a dispatch order with ID: 3554369 with contents as in the picture.



Description			Q
Packaging Number	Description	Quantity (Pcs)	
0150	E-Spacer, plastic	8	
0166	SB-spacer	4	
0250	E-Spacer, Foam	16	
1872	E-Collar	4	
1875	E-Pallet	2	
2318	E-Lid	2	

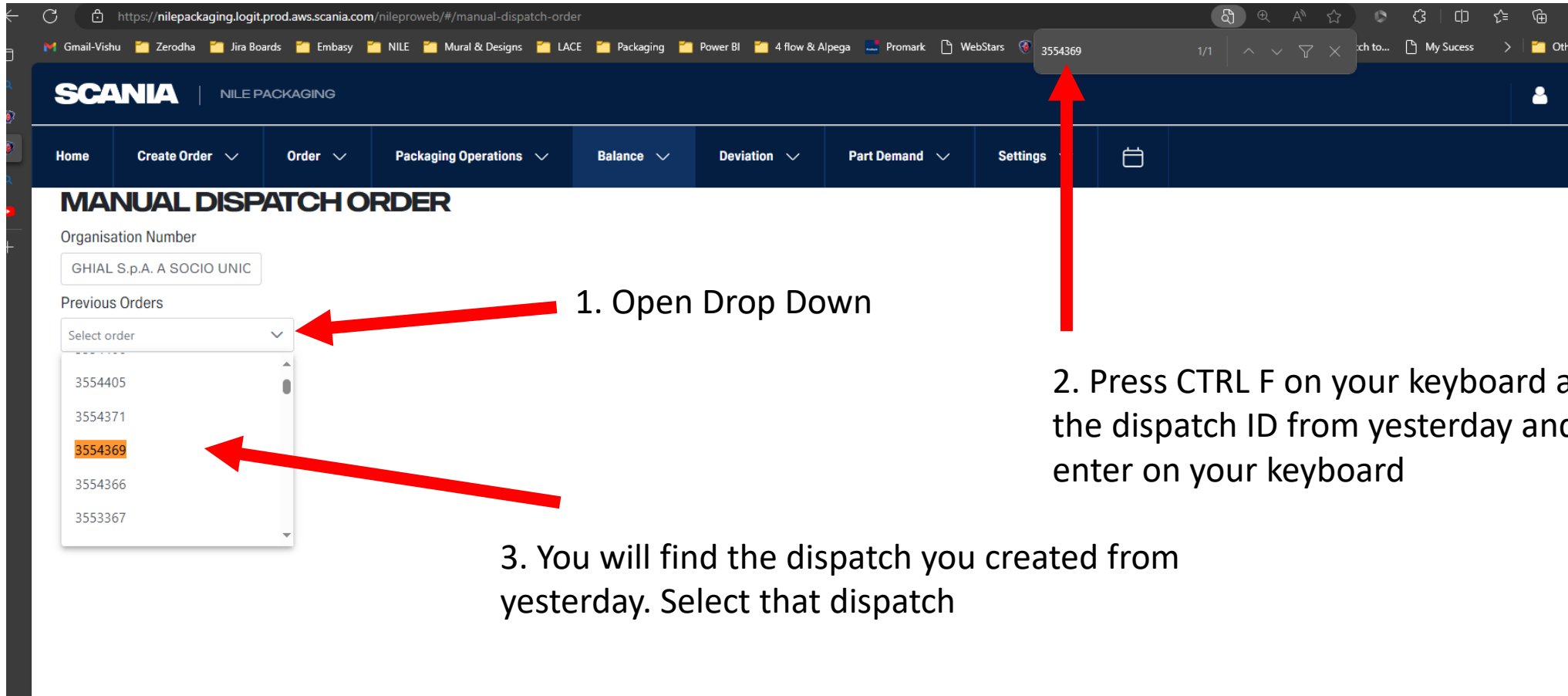
So **today** if I want to create the same dispatch again (Follow the steps in next picture



1. Open Drop Down

2. Press CTRL F on your keyboard and paste the dispatch ID from yesterday

3. You will find the dispatch you created from yesterday. Select that dispatch



1. Open Drop Down

2. Press CTRL F on your keyboard and paste the dispatch ID from yesterday and press enter on your keyboard

3. You will find the dispatch you created from yesterday. Select that dispatch



MANUAL DISPATCH ORDER

Organisation Number

GHIAL S.p.A. A SOCIO UNIC

Previous Orders

3554369

Add Packaging Number

Description		
Packaging Number	Description	Quantity (Pcs)
0150	E-Spacer, plastic	8
0166	SB-spacer	4
0250	E-Spacer, Foam	16
1872	E-Collar	4
1875	E-Pallet	2
2318	E-Lid	2

Showing 1 to 6 of 6 entries

Description		
Packaging Number	Description	Quantity (Pcs)
No record is available!		

Showing 0 to 0 of 0 entries

Load Data



DISPATCH

Scania Unit

Select a Scania Unit

Allowed Subflow

Select a sub flow

For any changes in settings, please contact customer support, packaging.planning@scania.com

MANUAL DISPATCH ORDER

Organisation Number

GHIAL S.p.A. A SOCIO UNIC

Previous Orders

3554369

Add Packaging Number

Description		
Packaging Number ↑↓	Description ↑↓	Quantity (Pcs) ↑↓
0150	E-Spacer, plastic	8
0166	SB-spacer	4
0250	E-Spacer, Foam	16
1872	E-Collar	4
1875	E-Pallet	2
2318	E-Lid	2

Showing 1 to 6 of 6 entries << < 1 > >> 10

Load Data →



Description		
Packaging Number ↑↓	Description ↑↓	Quantity (Pcs) ↑↓
0150	E-Spacer, plastic	<input type="text" value="8"/>
0166	SB-spacer	<input type="text" value="4"/>
0250	E-Spacer, Foam	<input type="text" value="16"/>
1872	E-Collar	<input type="text" value="4"/>
1875	E-Pallet	<input type="text" value="2"/>
2318	E-Lid	<input type="text" value="2"/>

Showing 1 to 6 of 6 entries << < 1 > >> 10

DISPATCH

Scania Unit Allowed Subflow

For any changes in settings, please contact customer support, packaging.planning@scania.com