

Welcome to Scania's Q&A Session

The session will begin shortly

INDUSTRY STANDARDS



THIS MEETING WILL BE RECORDED



POST YOUR QUESTIONS IN THE MEETING Q&A



FAQ'S & RECORDING WILL BE SHARED AFTER THE MEETING

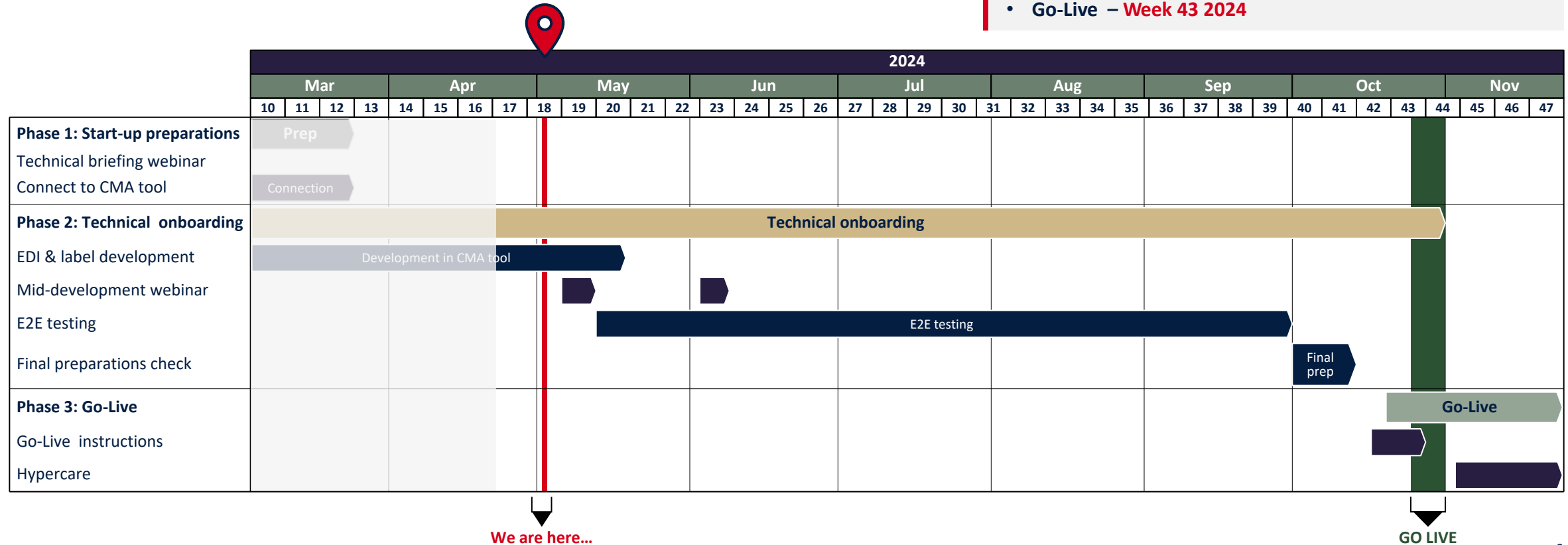




We are getting close to the development deadline in the CMA-tool

Deadlines overview

- Development done – May 2024
- E2E testing done – August 2024
- Go-Live prep done – September 2024
- Go-Live – **Week 43 2024**





Three important messages of the week

1

Connect to the CMA tool to start development

If you have not received a link to start development via email, please contact supplier.readiness@scania.com with your 7-digit supplier ID.

If you have more than one site, you need to do the CMA-campaign for each site using the different links sent to you.



2

If you have started the development, you are invited to a mid-development webinar next week

The topic is end-to-end testing, and it is important you participate to get all necessary information about the testing process. You will receive a link to the webinar in the outlook invite.

If you have not started development yet, you will get an invite later on.

3

Deadline for development is approaching – we start the testing process in week 20.

We are approaching the testing period. If you have not finished development yet, remember the deadline is May.

As soon as you have completed development, your progress will be validated and after that, you will shortly receive a test case.



Q&A Recap



Q&A recap

Process for onboarding to new EDI-messages and GTL

Q: What will happen when we are done with the development of the EDI messages and the labels?

A: Your development will be validated by Scania and then, we will perform E2E testing where your EDI messages and labels will be tested in an as-close-to-real-production-data as possible. The testing will be done together with the testing team at Scania and more specific information will be presented during the mid-development webinar that those of you who have progressed with development has been invited to this coming Tuesday. Additionally, we will update the Supplier Portal with more information about the E2E testing soon.

EDI-messages

Q: We have just started the development, but I cannot figure out what messages to replace.

A: We can break down your EDI messages into three different categories: **Delivery schedules**, **Advance shipping notice**, and **Invoice**. Your current delivery schedule is EDIFACT DELFOR 096A and will be replaced with **EDIFACT DELFOR D04A**. The current format for Advanced Shipping notice is EDIFACT DESADV D96A and will be replaced with **DESADV D07A**. The current format for Invoices is EDIFACT INVOIC D03A and will be replaced by **INVOIC D07A**. For more info on this, please read [the updated logistics manuals](#) (STD4172-1 and STD4172-10), that can be found on the Supplier Portal under Industry standards.

SCANIA CORPORATE STANDARD		
	STD4172-10	 SCANIA
Revision 7		Info class Internal



Q&A recap

SCC+4

Q: While analyzing your sample DELFOR I have question regarding for SCC+4 segments. For SCC+4 you refer to the date in DTM+11, is this a daily date or a weekly date?

A: DTM+11 is the daily date.

Fonts on the new labels

Q: What fonts and font sizes should be on the labels?

A: All fonts on the GTL label should be bold UPPER CASE Arial Narrow. All title text on the GTL label shall be 8pt for standard and 6pt for small labels. The content in the label shall be in English, the only exception is information sent from Scania via the EDI DELFOR message. This data shall remain in its original form. For more info on this, please read [the updated logistics manuals \(STD4172-10\)](#), that can be found on the Supplier Portal under Industry standards.

SCANIA CORPORATE STANDARD		
	STD4172-10	 SCANIA
Revision 7		Info class Internal



Q&A recap

Addresses in scope

Q: Which addresses does these changes apply to?

Billing address (NAD+BY)

Scania CV AB
S100
151 87 Södertälje
Sweden

Ship-to address Consolidation Point Hasselt

Scania Consolidation Point Hasselt
Hanzeweg 31
8061 RC
Hasselt

Ship-to address Logistic Center Hasselt

Scania Logistics Center Hasselt
Hanzeweg 24
8061 RC
Hasselt

A: The full address information can be found on the supplier portal under “Industry standards” - Technical documentation and guidelines. The document is named [Shipping & Billing Addresses](#) and can be found on the right-hand side of the page.

Gross and net weights on the label

Q: When the gross and net weights have decimal values it's not possible to fit the information in the label or should we round the weights to whole kilos or should we reduce the font size?

A: You can reduce the number of decimals to only one, and it will fit.



Q&A recap

Labels in/out of scope

Q: The CMA portal shows that we have to develop Master and Mixed labels but we never send mixed. Do we still have to develop a Mixed label?

A: If you are not sending a Packing type, please contact edi.development@scania.com and they will update the campaign in CMA tool for you.

Access to Scania Portal

Q: Could you please provide us with the credentials to access the Scania portal and obtain the guidelines/files? Despite following the slides and accessing the portal via the provided link (without logins), we're unable to retrieve the files.

A: If you have problem with access or questions about credentials to Scania Supplier Portal please contact: supplier_portal.helpdesk@scania.com



Q&A recap

Goods transferring through Hasselt

Q: We deliver to more Scania sites than SHB and LCH via Hasselt (ex BL1, RW2 and RW), will those not be included even though they transfer through Hasselt?

A: No, However, to avoid you needing to maintain two different setups, Scania has developed an EDI translator. As a supplier you can thus send the new EDI messages and labels to all Scania PRUs, as they will be translated within Scania. Meaning, once you go-live you will only be required to send via the new formats.

Example DELFOR

Q: Can I find example DELFOR somewhere?

A: In the CMA tool, you have the possibility to send a dummy DELFOR. You can also find sample files on our page on Supplier Portal. In the E2E testing, you will receive a DELFOR with real data.



Q&A recap

DESADV dummy values

Q: In the DESADV the GIN segment is mandatory but we from the tire industry ship loose? Will you let us know what to put into the message, we might need dummy values?

A: Please send an email to edi.development@scania.com and we will get back to you on that.

Go-live

Q: After receiving access to CMA tool and after testing process, in what timeline we can expect that new part numbers and schedule agreement numbers will be announced from Scania to supplier?

A: **Go-live** for all changes are in **week 43**. After this go-live date you will be able to send the new messages.



Q&A recap

New supplier IDs

Q: At which moment will the new supplier numbers and part numbers be provided, after testing or already before?

A: The new 7-digit SAP supplier number is displayed in the CMA-tool. Please note that New Supplier number along with Existing 7 digit SSIP supplier Number both are valid. All the development of New EDI messages & Labels will be done using New Supplier Number. Part numbers are those you are supplying to Hasselt LHCE & CP. In the E2E-testing, we will test actual data with part numbers.

CMA invitations for several plants

Q: We have multiple invitations for developing in the CMA-tool, all for different entities within our company. Do we have to develop new EDI-messages for all our plants or is it enough if we do it for just one?

A: Each entity that has been invited to the CMA-tool is obligated to do the development and adhere to the full onboarding journey.



Q&A recap

Packaging Types

Q: I would like to ask you about Packaging Types defined in the CMA tool. All three boxes are 'Pre-ticked-in' and we cannot change it even though we do not use Mixed Loading Unit. Would it be possible to exclude this type of packaging from testing ?

A: If you are sure that you do not use a specific packaging-type and cannot "uncheck" the box for it, please reach out to edi.development@scania.com and they will help you out.

Validating new GTL-labels

Q: I have designed our new GTL-labels adhering to the instructions. I want to validate them but are not able to upload them in the CMA-tool. What to do?

A: You need to upload your EDI-messages and have them approved through the compliance check before you reach the pages where you upload the GTLs. Be aware that you need to have both your EDI-messages and your labels approved before being able to participate in the E2E-testing. If you have more questions regarding the development in the CMA-tool, please read the CMA Tool - step by step guide available at the supplier portal. If you have any questions after reading the guide, please contact supplier.readiness@scania.com.

Next steps & actions required by you as a supplier

Next steps for suppliers

- ✓ Ensure that you have submitted the IT landscape survey [accessible via this link](#).
Deadline Past
- ✓ Complete development of EDI messages and labels in Scania CMA tool.
Deadline: May
- ✓ Attend the upcoming weekly Q&A session to get answers to technical questions.
Occurs every Thursday at 2:00 to 2:45 PM
- ✓ Attend the mid-development webinar, which will focus on the upcoming testing process and the next steps.
May 7th for those who have progressed in the tool already
Beginning of June for those who are about to start development
- ✓ Perform E2E testing of EDI messages and labels.
Starting from w.19

Guidelines and contact details



Technical specifications, instruction videos and communication materials to be found at [Scania Supplier portal under Industry standards](#).



Technical questions can be directed to edi@scania.com



Question about functionalities of CMA tool can be directed to tps_scania@seeburger.de

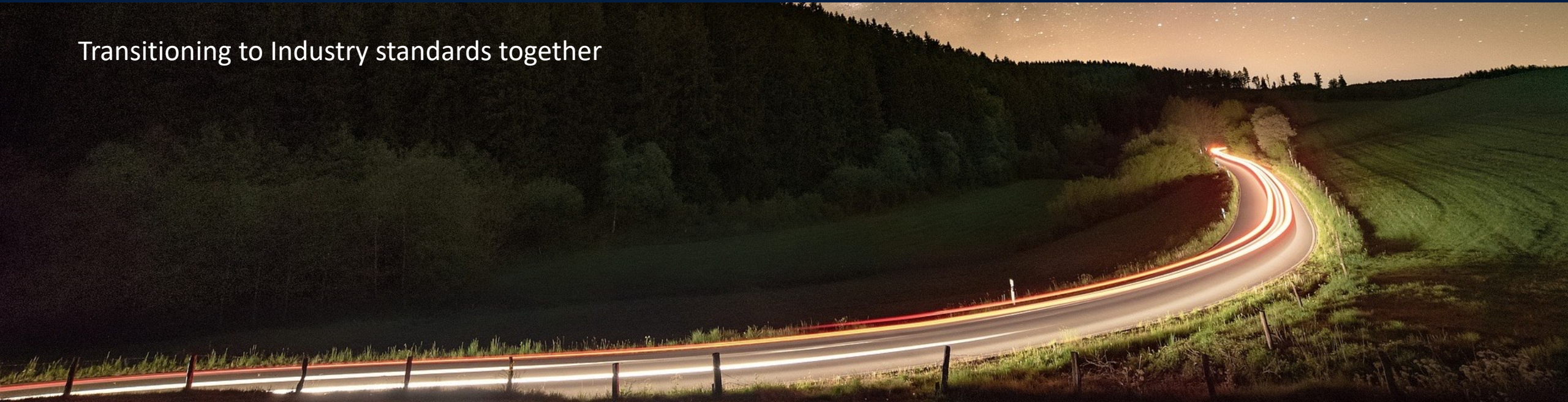


All other questions can be directed to supplier.readiness@scania.com



Thank you for participating today!

Transitioning to Industry standards together





Appendix



What do suppliers need to implement?

1 Updated terms & conditions

- Scania is changing the standards in the **logistics manual**.
- Terms & Conditions** updated to include new EDI and HU requirements.
- Scheduling agreement** introduced to replace "open order".
- Supplier number** will be updated.

2 Updated EDI messages

- New EDI** message versions for:
 - Delivery schedule
 - Advanced Shipping Notice
 - Invoices
- IT changes and development required** from supplier.

3 Handling Unit (HU) number

- Suppliers are **required to implement** a unique global Handling Unit (HU) number.
- Suppliers need to **apply the HU number** (procure and apply) on the **ASN, and transport label**
- Supplier are required to apply DUNS or ODETTE**. SSCC is not approved.

4 Updated transport labels

- Serial number field on **transport label must include the HU number** which is longer.
- Switching barcode from 39 to 128** due to length of the HU number.
- Include data matrix ECC200**
- To be applied on both outer (pallet) and inner (boxes) packaging levels.

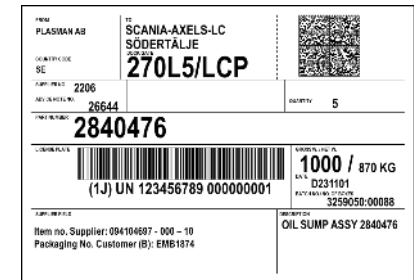


Scania EDI, STD4172-1
Scania Goods Labels, STD4172-10

EDI Activity:	Current message:	Replaced by:
Delivery Schedules	EDIFACT DELFOR D96A	EDIFACT DELFOR D04A
Advanced Shipping Notice	EDIFACT DESADV D96A	EDIFACT DESADV D07A
Invoices	EDIFACT INVOIC D03A	EDIFACT INVOIC D07A

```

UNA+?
UNB+UNOC:4+SENDERUNB123 OD:1234+094200005560840976PU029 OD+221010:1501+13239
UN+7654+DESADV.D/D/UN:GSSB11
BGM+35+1234567896765432
DTM+137:202210101501:209
DTM+11:20221010:10Z
MEA+AA0+AA0+GRM:55000
NAD+BY+SEDA:52
NAD+ST+BLC:52+SCANIA Battery LC+Verkstadsvägen by270+Södertälje+151:38+SE
LOC+1+RD20:52
NAD+SE+2000000:52+NAME+STREET AND STREET NUMBER+CITY+POSTAL CODE+SE
NAD+MF+2000000:52+NAME+STREET AND STREET NUMBER+CITY+POSTAL CODE+SE
NAD+SF+2000000:52+NAME+STREET AND STREET NUMBER+CITY+POSTAL CODE+SE
CPS+1+1
PAC+4+35+52
MEA+AA0+G+GRM:50000
QTY+02:4:05Z
CSC+00
SIR+3+1+JUN96765432100000961:CUJ
SIR+3+1+JUN96765432100000962:CUJ
SIR+3+1+JUN96765432100000963:CUJ
LIN+++185240Z:IN
QTY+12:16:06Z
ALH+SE
RFF+AS:12345678900001
UNT+25+7654
UNZ+1+18239
  
```





Delivery schedules

Technical specifications for implementation

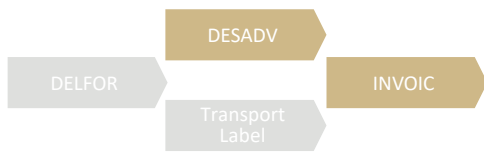
DELFOR D04A

Activities

- Update Scania Association Assigned Code: GBSQ11 (note that this is applicable for suppliers using Association Assigned Code within their own EDI platform).
- Implement ship to segment NAD+ST (for existing Scania supplier, replace NAD+CN).
- Implement ship from segment NAD+SF.
- Map for segment QTY+70 for receiving cumulative quantities (backlog as a separate segment QTY+83 will not be sent).
- Update reference RFF+AJS to Scania Scheduling Agreement, segment is Replacing RFF+ON.
- Refer to the date in DTM+11 as pickup date at the supplier location.
- Make sure that you can split one EDIFACT file into several DELFORs.

Deliverable from phase

- DELFOR can be received and viewed by supplier.



Advanced shipping notice (ASN) and invoices

Technical specifications for implementation

DESADV D07A

Activities

- Update Scania Association Assigned Code: GBSB11
- Contents in DESADV corresponds to the DELFOR (supplier number, address, part number, SA number, quantities)
- Ensure the data in BGM-segment is no longer than 16 characters.
- Implement segment NAD+SF (Ship From)
- Apply outer and inner packaging sequences (CPS loops) according to packaging specification.
- Apply prefixes in segment PCI - 1J, 5J and 6J to accommodate the Handling Unit (HU) number structure.
- Update reference RFF+AJS to Scania Scheduling Agreement, segment is Replacing RFF+ON.
- Acquire Handling Unit (HU) number according to the Scania Standard Document STD 4172-10 and apply to GIR and GIN segments.
- If bundling will be applied, separate each DESADV with a new UNH segment in the file.

Deliverable from phase

- ✓ Supplier has received an approved compliance report of DESADV.

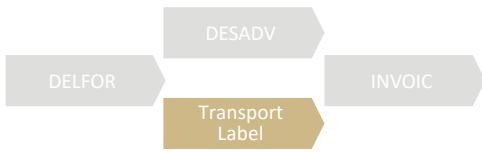
INVOIC D07A

Activities

- Update Scania Association Assigned Code: GBSO11
- Implement segment NAD+SF (Ship From).
- Update reference RFF+AJS to Scania Scheduling Agreement, segment is Replacing RFF+ON.
- Update content in segment RFF+AAK. Value needs to be taken from the DESADV - BGM-segment.

Deliverable from phase

- ✓ Supplier have received an approved compliance report of INVOIC.



Transport labels

Technical specifications for implementation

Transport labels GTL

Activities

- Implement Handling Unit (HU) structure in serial number field.
- Label variants: Master Label / Mixed Label / Single Label / Small Label
- Apply barcode 128 to licence plate barcode..
- Apply data matrix ECC200 (incl. Reed- and Solomon error correction), ISO/IEC 16022
- Size of text and data elements to STD4172-10 (address, qty, etc).
- Replace prefixes S, G & M with 1J, 5J & 6J in serial number field.
- Share PDF file of transport label to Scania EDI when completed according to STD4172-10.

Deliverable from phase

- ✓ Transport label have been reviewed and approved by Scania EDI.

New label design (preview for Single Label)

FROM TEST SUPPLIER AB ABARENDALS ALLE 418 79 GÖTEBORG COUNTRY CODE SE		TO SCANIA BATTERY LC SÖDERTÄLJE SE DOCKGATE		
SUPPLIER NO. 9849		RD20/BHRS		
ADVICE NOTE NO. 28134		QUANTITY 5		
PART NUMBER 2840476 <i>Example</i>				
LICENSE PLATE (1J) UN 123456789 000000001			GROSS W. / NET W. 1000 / 870 KG DATE D231101 BATCH NO./NO. OF BOXES 3259050:00088	
SUPPLIER FIELD Item no. Supplier: 094104697 - 000 - 10 Packaging No. Customer (B): EMB1874			DESCRIPTION OIL SUMP ASSY 2840476	

Main differences with OTL

- 1 barcode instead of 5 barcodes.
- Data matrix code with information.
- Increased font sizes for selected data fields.
- Supplier field for information.
- Unique identifier (license plate).